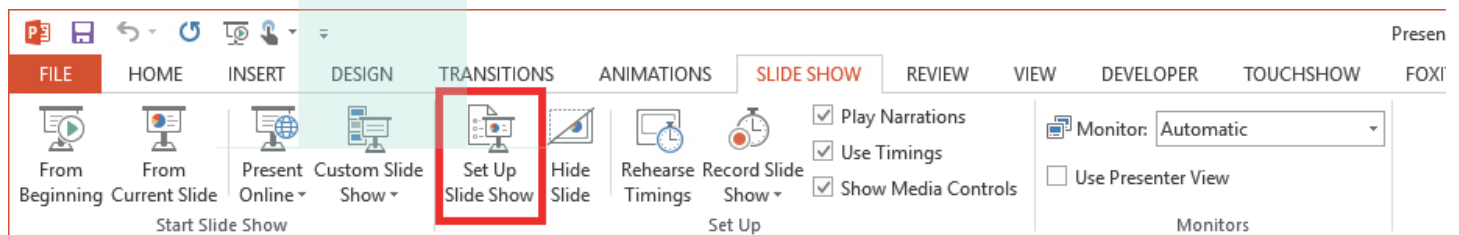


How to automate the start-up of your interactive

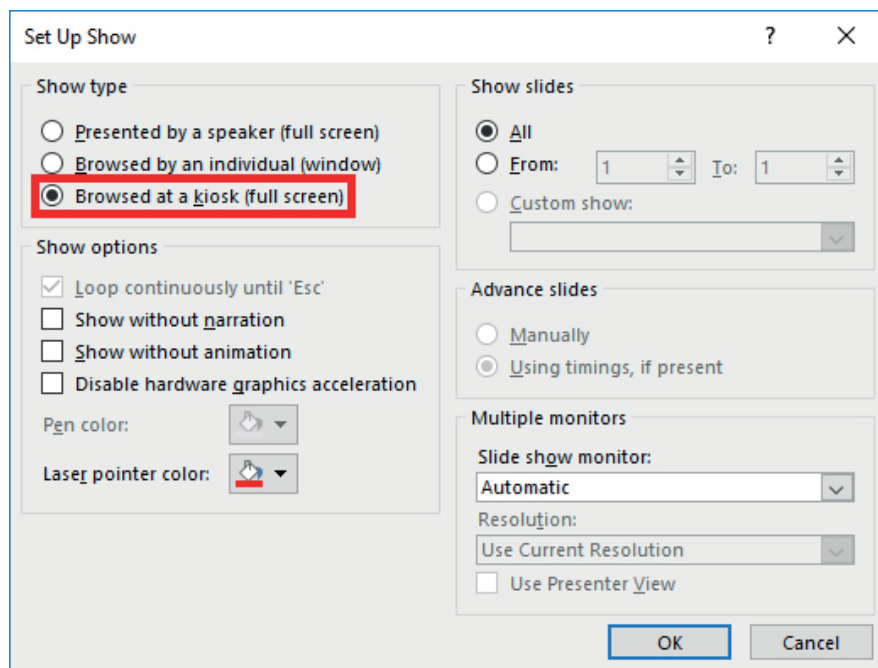
This tutorial guides you through the process of setting up your interactive to automatically start-up when your machine is switched on.

Ensure your slideshow is set to 'Browsed at Kiosk'

- 1 Open you interactive in PowerPoint
- 2 Click **Slide Show** tab > choose **Set Up Slide Show**



- 3 Tick **Browsed at a kiosk (full screen)** and click **OK**

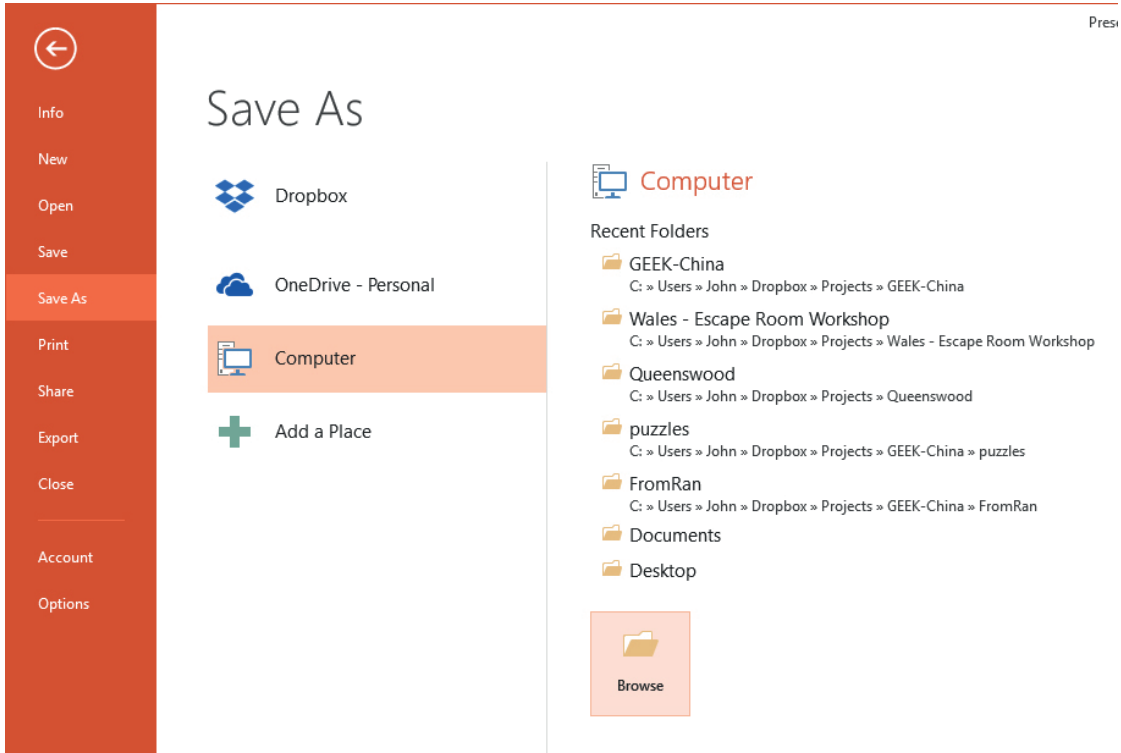


Save your Slide Show as a 'Show'

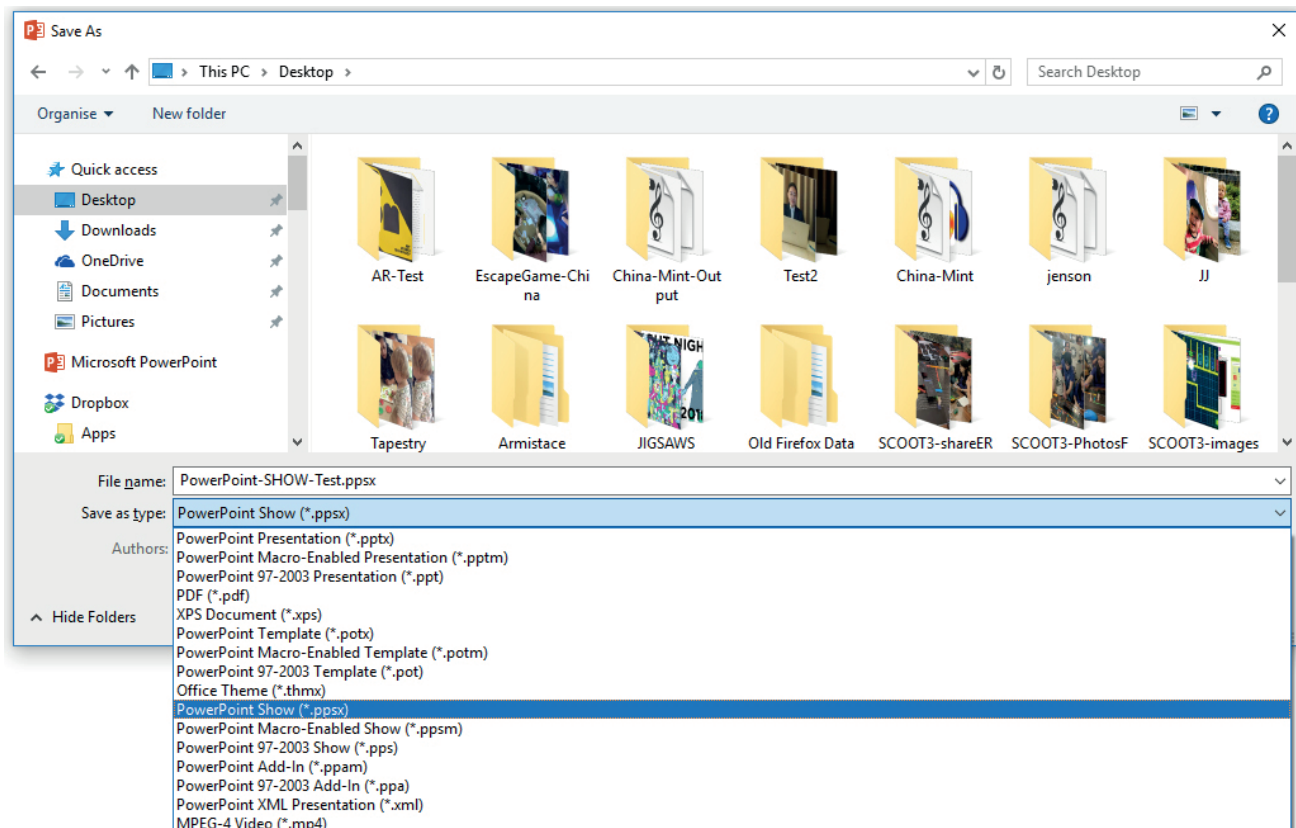
If your Slide Show is saved as a 'Show' then when you double-click the icon it will immediately launch the Show full-screen (instead of opening PowerPoint in an edit mode).

(Note: this means that if you want to edit your Show you can no longer just double-click – you will need to instead open PowerPoint first and then choose your file manually.)

1 Click **File** > **Save As** > select **Browse**



2 Use **Save as type** to change to PowerPoint Show (*.ppsx)



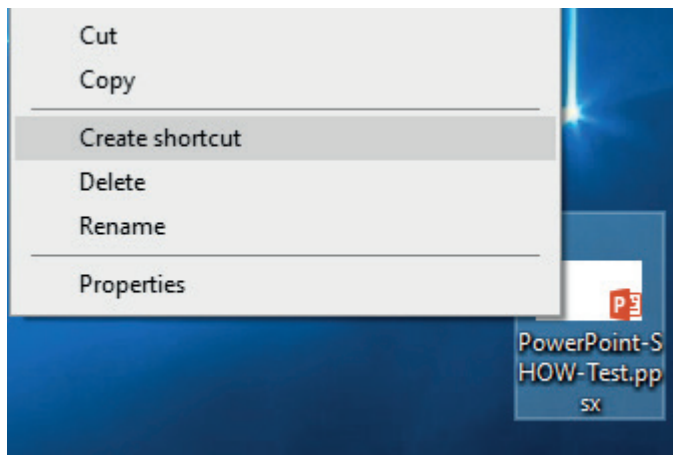
- 3 Give your Show a name and save it somewhere (for this demo it is to the desktop)
- 4 You can now close PowerPoint and test that your Show launches correctly.
- 5 Double-click your **Show** file and it will launch full-screen and straight into the Show.

2 How to automate the start-up of your interactive

Add your Show file to the start-up folder

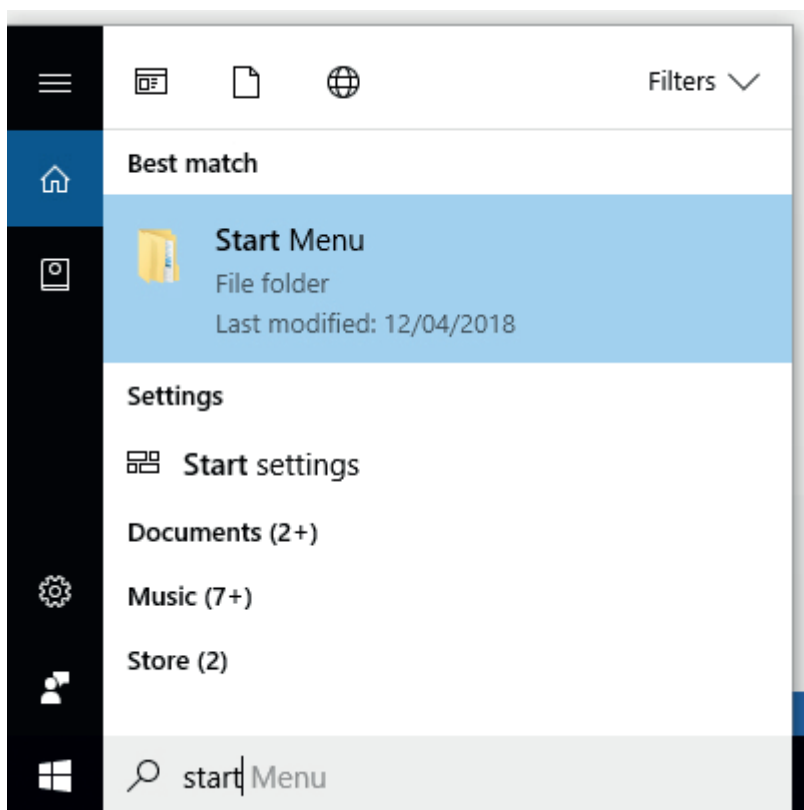
Anything placed in the start-up folder Windows will launch automatically after Windows has loaded. This means that our Show should launch automatically.

- 1 Create a shortcut to your show by right-clicking the .ppsx file and choose **Create shortcut**



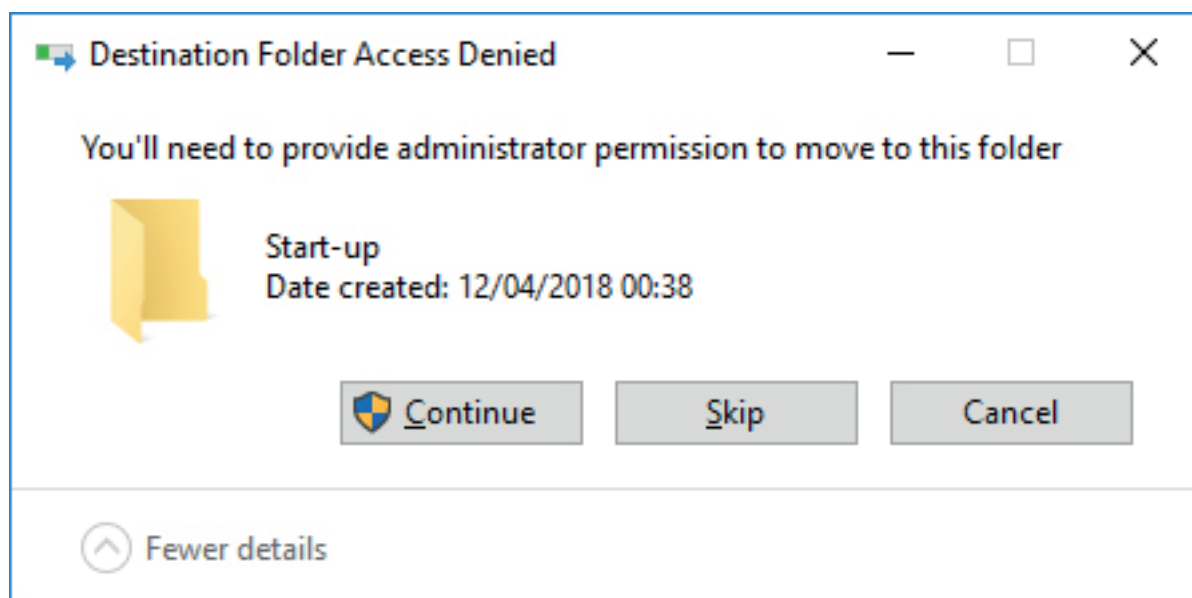
- 2 Locate the Start folder. In the Search box type Start and select **Start Menu** from the options. In case you want to use the explorer to go their manually it location on disk is:

C:\ProgramData\Microsoft\Windows\Start Menu

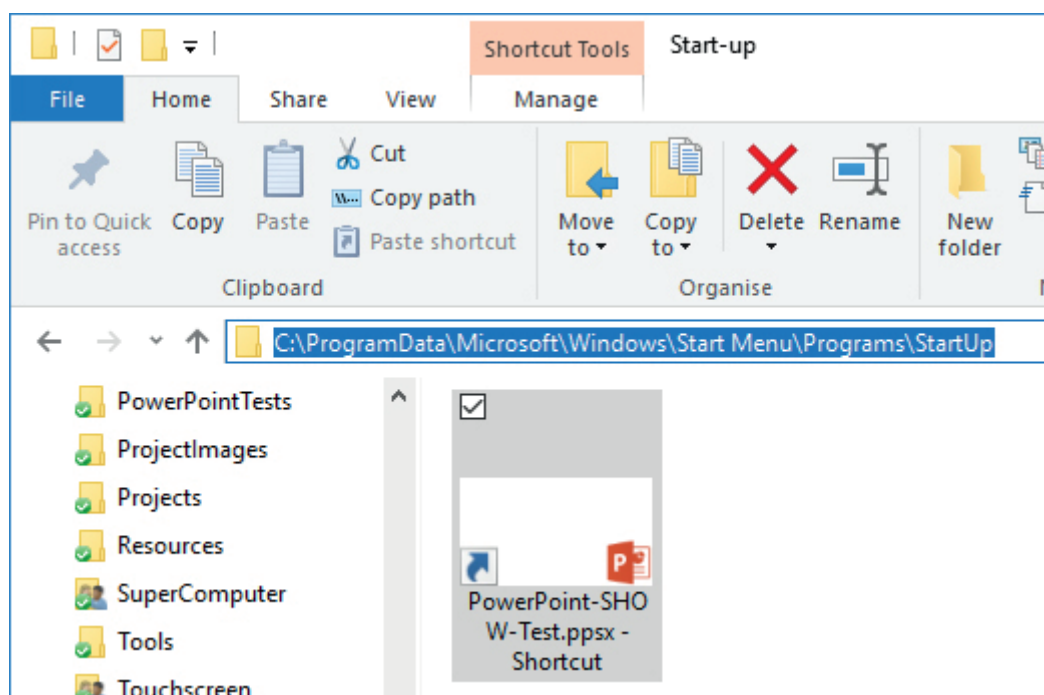


- 3 This will open Explorer at the Start Menu location. Navigate to the **Programs** folder and then the **Start-up** folder.
- 4 Drag the **show shortcut** you just created into this folder.

If you get the message about requiring administrator permission then click **Continue**



You should end up with a folder that looks a bit like this:



Finally restart your machine and check that the interactive launches automatically.

Resource developed by



Funded by

