

20 out of 24 Accredited organisations in Gloucestershire responded in 2018/19

13 Independent, 5 Local Authority, 2 Nationally Funded Organisation (National Trust/English Heritage)

633,520

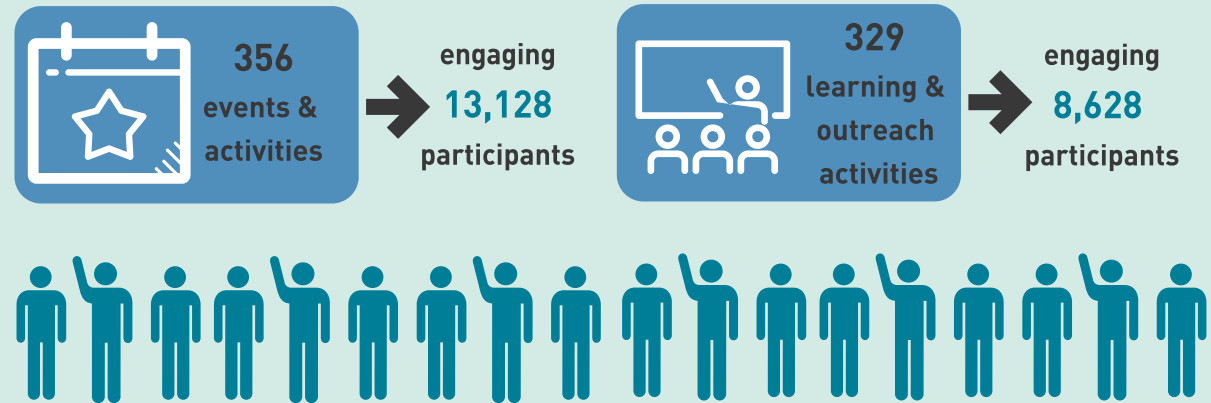
total visits to museums

£14,698,920

gross visitor impact

Museum Size	Visits	Of total sub-regional visits
Micro (n8)	34,320	5%
Small (n3)	46,130	7%
Medium (n6)	181,980	29%
Large (n1)	62,330	10%
Largest (n2)	308,770	49%

Size categories based on annual visitor numbers:
'Micro' ←10k, 'Small' 10k-20k, 'Medium' 20k-50k,
'Large' 50k-100k, 'Largest' →100k



35% entirely volunteer-led
Reported by 7 organisations

60% employ staff
Reported by 12 organisations

1,200
active volunteers

116,760
volunteer hours

£778,390
economic value
of volunteer hours

Attribution-NonCommercial-ShareAlike 4.0 International
(CC BY-NC-SA 4.0)

<https://creativecommons.org/licenses/by-nc-sa/4.0/>

