

18 out of 22 Accredited organisations in Wiltshire responded in 2018/19

11 Independent, 1 Local Authority, 6 Nationally Funded Organisation (National Trust/English Heritage)

776,870

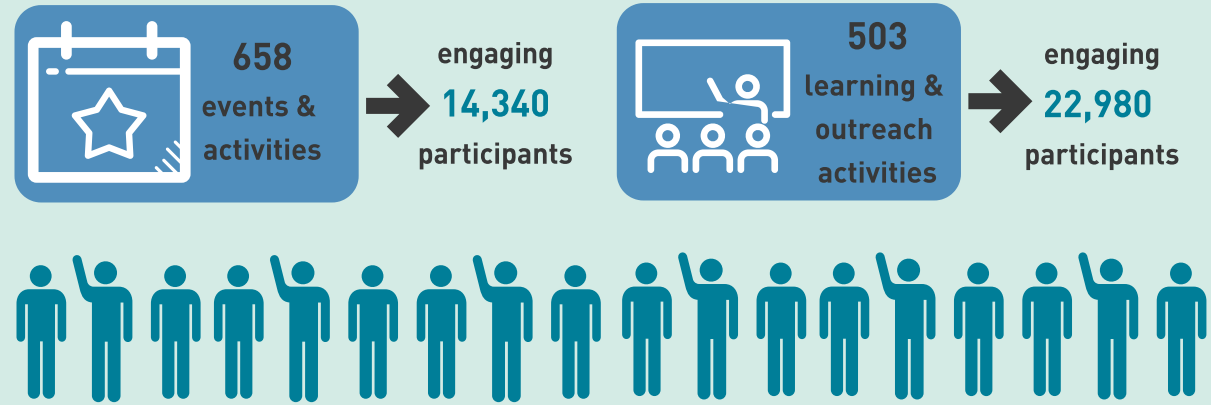
total visits to museums

£14,300,500

gross visitor impact

Museum Size	Visits	Of total sub-regional visits
Micro (n4)	8,740	1%
Small (n6)	78,740	10%
Medium (n4)	139,700	18%
Large (n1)	75,000	10%
Largest (n3)	474,700	61%

Size categories based on annual visitor numbers:
'Micro' ←10k, 'Small' 10k-20k, 'Medium' 20k-50k,
'Large' 50k-100k, 'Largest' →100k



33% entirely volunteer-led
Reported by 6 organisations

67% employ staff
Reported by 12 organisations

2,367
active volunteers

224,553
volunteer hours

£1,497,020
economic value
of volunteer hours

Attribution-NonCommercial-ShareAlike 4.0 International
(CC BY-NC-SA 4.0)

<https://creativecommons.org/licenses/by-nc-sa/4.0/>

