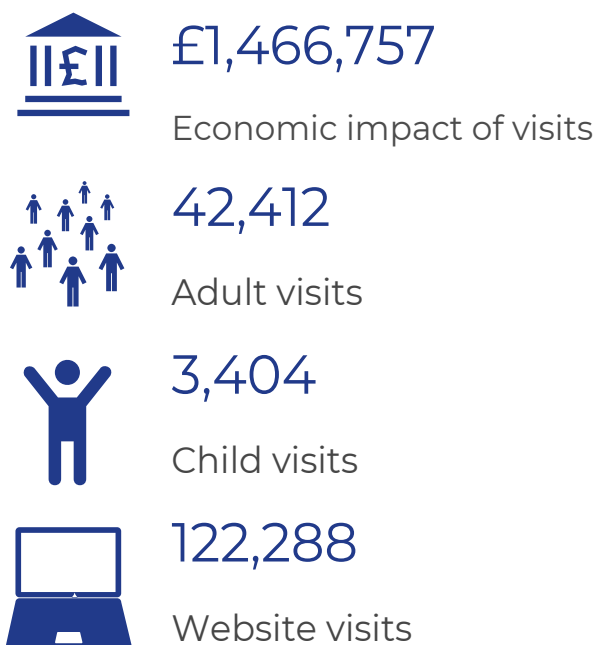
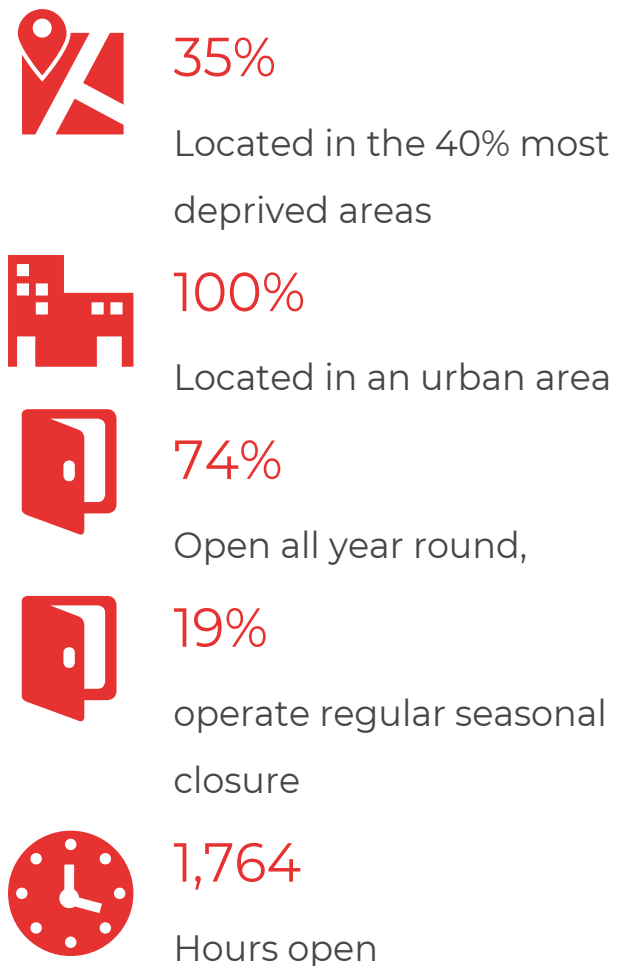
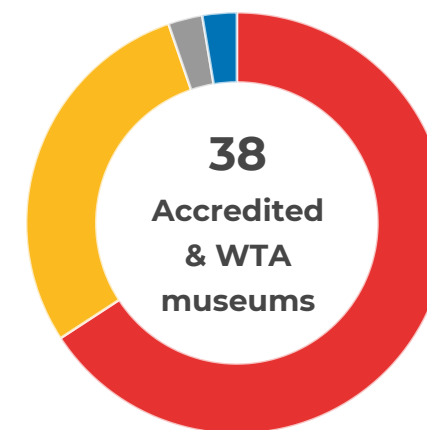
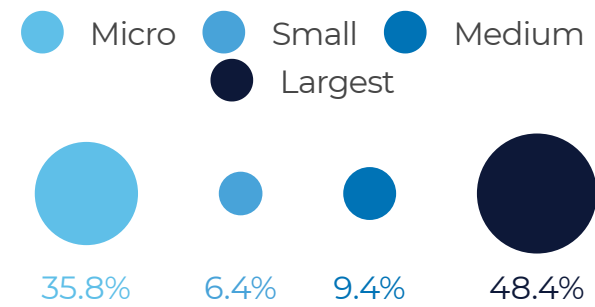


What does a museum in the West of England look like?

23 of 37 museums within scope took part. The data they provided has been extracted from regionally weighted data to be representative of all independent, local authority and English Heritage museums in the area. The values presented are annual, 2019/20.



48% receive more than 100K visitors each year



Supported using public funding by
ARTS COUNCIL ENGLAND

What does a museum in the West of England look like?

23 of 37 museums within scope took part. The data they provided has been extracted from regionally weighted data to be representative of all independent, local authority and English Heritage museums in the area. The values presented are annual, 2019/20.



£341,450

Total income



£38,347

Retail income



£3,312

One-off donations on-site



£80,000

Regular public subsidy



£11,500

Grants income



8*

Number of staff FTE



55

Number of volunteers



£67,637

Value of volunteer hours

This pdf is an excerpt from the Annual Museum Survey 2020. To view the full South West Annual Museum Survey 2020 please visit southwestmuseums.org.uk/what-we-do/sector-research/

The Annual Museum Survey is operated by South West Museum Development hosted by Bristol City Council with support from Pearson Insight. For further information on the process undertaken for the Annual Museum Survey 2020 please contact museum.data@bristol.gov.uk



Supported using public funding by
**ARTS COUNCIL
ENGLAND**

This data excludes National Trust and National museums.

*All values are median. *n20 museums provided FTE*